

Cisco 300 Series Configuration for use with myMix

Before you start:

- You need a computer with a web browser application.
- You need the configuration files for the Cisco 300 Series on the hard drive of this computer. They can be downloaded from http://www.movekcorp.com/downloads/myMix_Cisco_300_Series_Config.zip
- You need one CAT5 cable to connect to one of the Fast Ethernet ports of the 300 Series switch.
- Our configuration files are made for switches that are in default setting, if in doubt, reset the switch.

For the configuration you should not have anything connected to the switch!

Power up the switch by plugging the power adaptor to the switch. The switch will take several minutes to boot up. Turn off your wireless adapter in your computer. Don't use any other LAN connection on your computer! You might have to turn off your firewall.

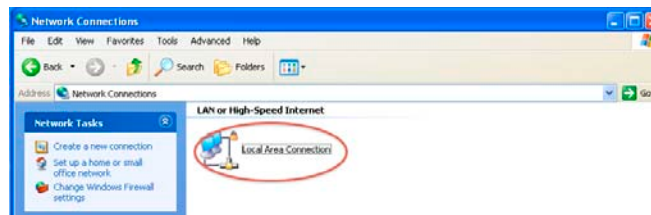
Change your computer's IP to the static address 192.168.1.100 (if you know how to do that you can go straight to topic 1).

Depending on which version of Windows you are using the steps to get to the Network Connections may vary here the steps for **Windows XP** (Vista and Windows 7 below)

On the Start Menu select the Control Panel and then select Network Connections.



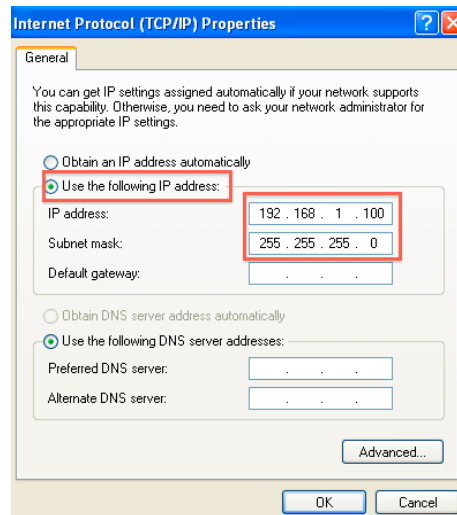
In the Local Area Connections for your PC, select the Local Area Connection that is tied to the Ethernet port on the machine and right-click on it. A dialog menu will come up and at the bottom, select Properties.



Select the highlighted item and then select the Properties button on the lower right side.



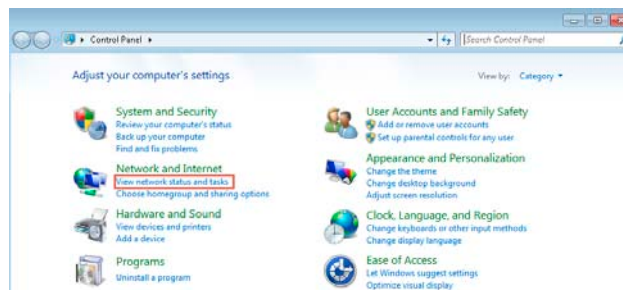
Under the Internet Protocol Properties, change the selection from "Obtain an IP address automatically" to "Use the following IP address." In the IP address, set it to 192.168.1.100 and the Subnet mask to 255.255.255.0. Click Ok to apply the settings, and then click Ok again for the previous Properties window.



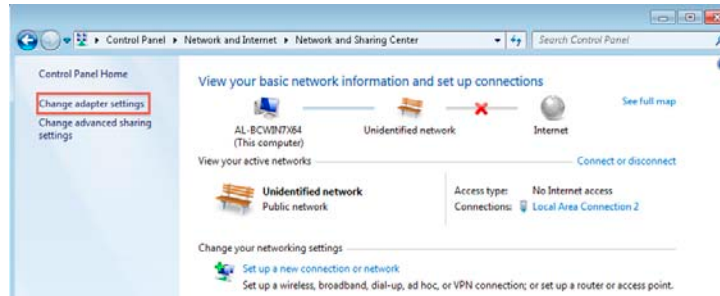
Your computers IP address is now set statically. (If you later want to use the LAN port for the internet, go back to the menu above and re-select obtain an IP address automatically).

Windows 7

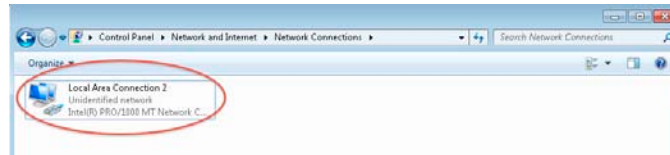
Open Control Panel and click on "Network status and tasks"



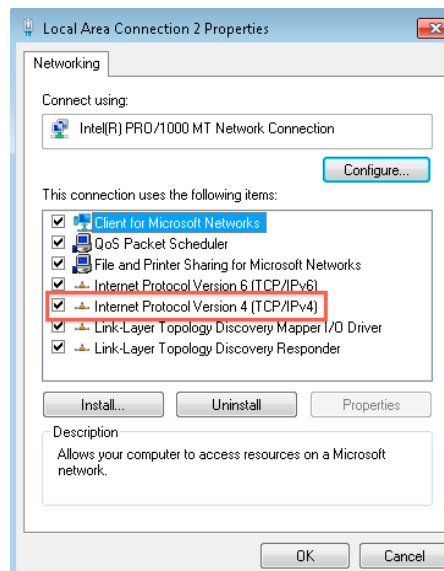
Then click on "Change adapter settings"



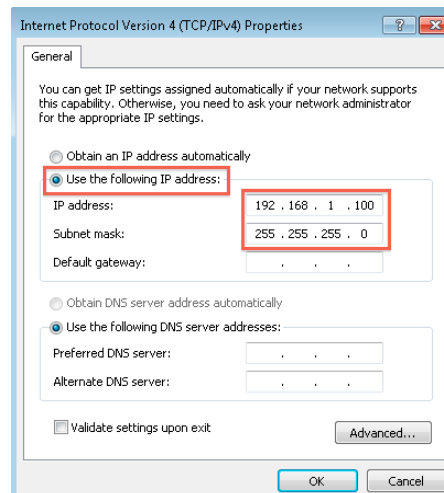
Click on properties (right click)



Select IPv4, then properties:



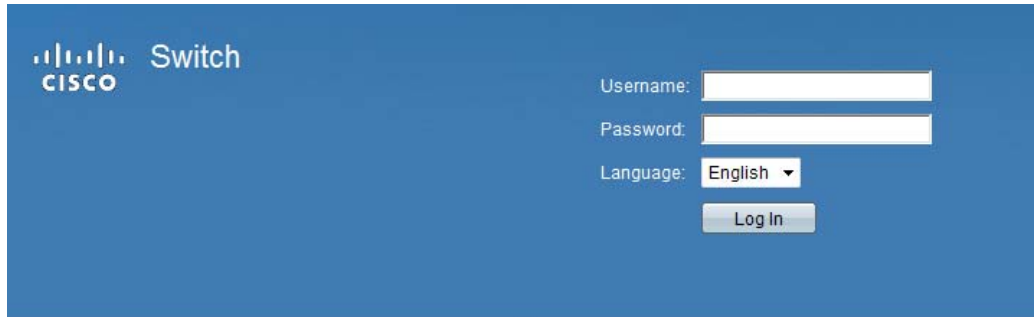
Change to "Use the following IP address and enter 192.168.1.100 and subnet mask 255.255.255.0



1 - Connect to the switch – transfer the configuration file and save it

1. Connect one Fast Ethernet Port of the switch to the LAN port of your computer with a network cable.
2. Open your web browser and type in the following address - <http://192.168.1.254>.

The log in page will come up:

The image shows the login page for a Cisco switch. It has a blue background with the Cisco logo and the word "Switch" in the top left. On the right side, there are three input fields: "Username:" with a white text box, "Password:" with a white text box, and "Language:" with a dropdown menu set to "English". Below these fields is a "Log In" button.

3. Enter username and password to log in. If you haven't changed it before the default setting is:

user name: **cisco**

password : **cisco**

4. After you enter the password you will be prompted for a new password.

IMPORTANT NOTE: since 12/2011 there is a new firmware rev on the switches available (1.1.. and 1.2...).

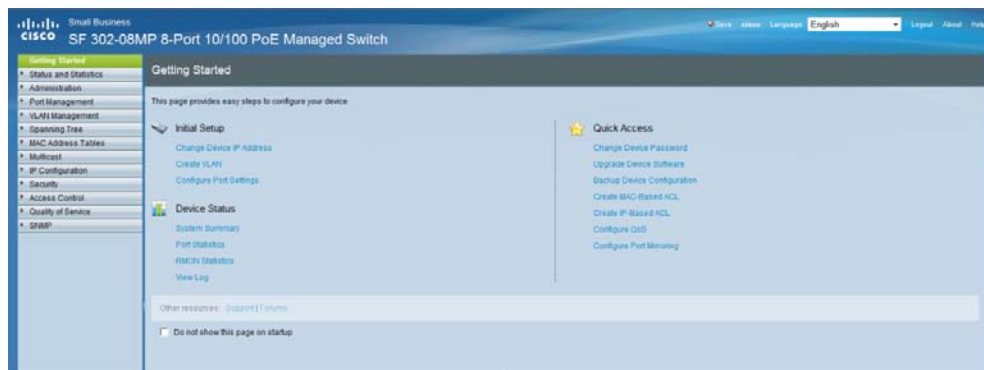
If you see a rule about a minimum 8 digit password that means you have a switch with newer firmware. Please carefully pay attention to the differences.

If you have the original release firmware (1.0.27) you can leave the field for the new password blank.

If you have new firmware use something like : Pa\$\$word

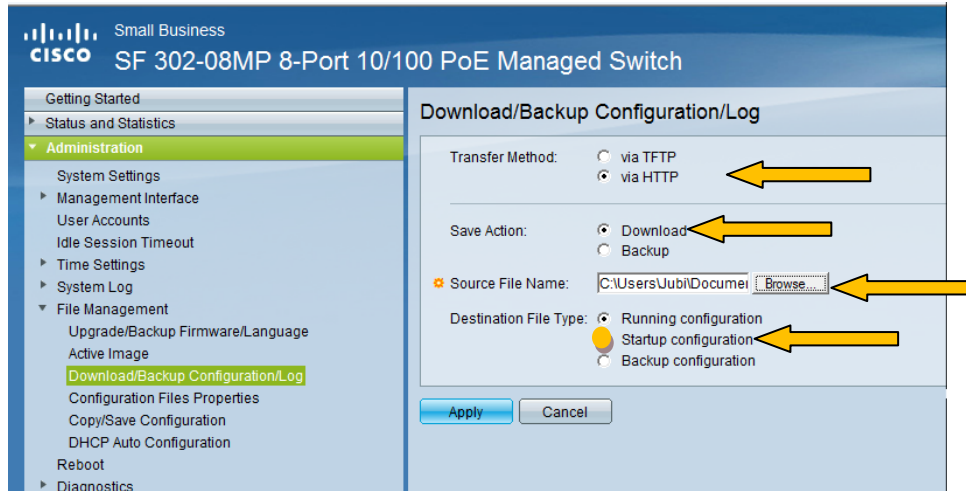
If the file transfer works correctly you won't need this password anymore.

Once the password change is accepted, you will see the "Getting Started" page.

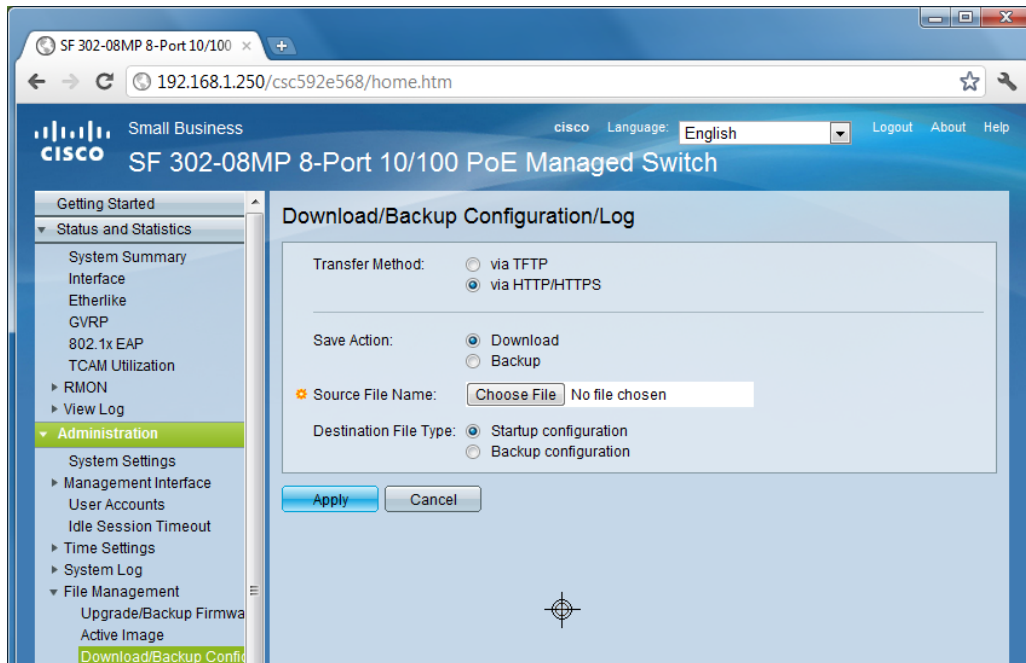


5. On the left side under Administration, select File Management and then Download/Backup Configuration/Log. Select as transfer method "via HTTP". Save Action should be on "Download".

New firmware version will be on transfer via HTTP already.



Screen view with original firmware. Select "Start Up Configuration".



Screen view with firmware 1.1.x. and 1.2.x (Start Up Config already selected).

Click Browse / Choose file and navigate to the location of the configuration file.

Make sure you select the correct file for your switch! There are configuration files for different models.

myMix_Cisco_300_Series_Config			
Name	Änderungsdatum	Typ	Größe
SF 300 24P G1-G4 252	04.04.2013 18:47	Textdoku...	16 KB
SF300-48P_g4_Uplink	03.06.2012 13:19	Textdoku...	2 KB
SF302-08_g2_Uplink	03.06.2012 13:19	Textdoku...	2 KB
SF302-08MP_g2_Uplink	03.06.2012 13:19	Textdoku...	2 KB
SG300-10_G1-G8_Uplink	03.06.2012 13:19	Textdoku...	2 KB
SF302-08MP-G1-G2-Uplink	03.06.2012 13:19	Textdoku...	2 KB

Select Destination File Type: Start Up configuration.

6. Hit Apply. Confirm the notification not to change windows while download is active.

7. You'll get a prompt that the download was successful. You can also see the size of the data transferred. It should show about 1600kb. If this shows 0kb, or an error message, the transfer was not successful.

Setting has been transferred to the startup configuration (not running config) to make it active you need to reboot the switch (takes 2 minutes or so to power up) then test it (11). Don't save the setting.

Note: the myMix configuration files include as password a blank field.

So next time you want to log on, user name: cisco, pw: _____ (leave empty). If you can't log on with that information and need to use the "Pa\$\$word", Cisco to log on, then the config files has not been transferred correctly. Please repeat the procedure.

8. To verify the correct setting

-connect two myMix devices to the Fast Ethernet ports

-send audio from one to the other device. You should hear the audio clear and crisp.

Also check under Settings –Administration – About this myMix the Master Clock Address: this should be the same on both devices. If that's not the case, repeat the procedure.

If you follow the above instructions your myMix system should work perfectly.

09 - OPTIONAL Changing IP address

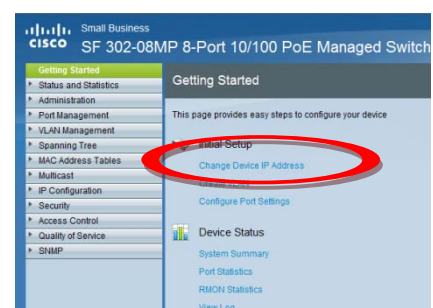
If you plan to use multiple switches for myMix (connected through GB Uplink ports in a star configuration) they need to have different IP addresses. The default for Cisco is 192.168.1.254

To change the IP address of a switch:

- log in (username: cisco, password: ____ (blank)

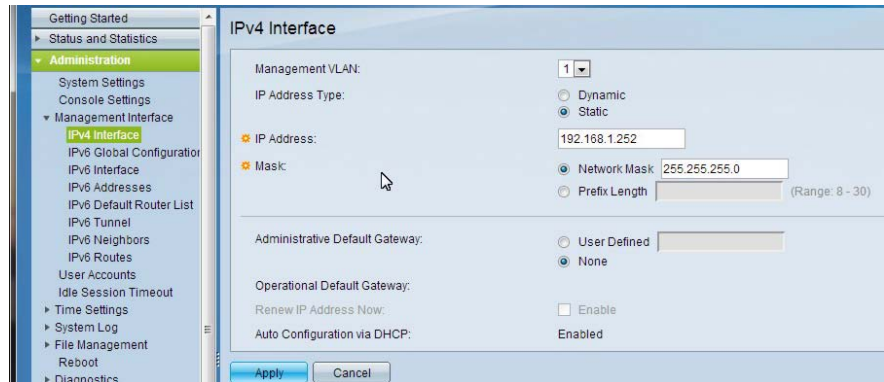
- on the start page click on Change Device IP Address

MOVEK,LLC 2013



- Click on Static and type in a new IP address (e.g. 192.168.1.252) and hit apply
- you will be kick out of the session and need to log on again
- Save the settings like described below.

(Mark the new IP address on the switch, because it is needed to log in.)



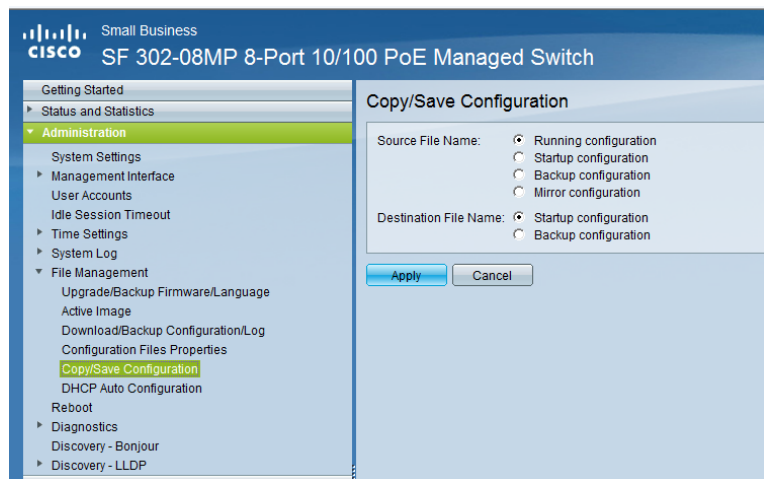
SAVE:

Administration-

-File Management

-Copy/Save Configuration

Hit Apply to save the Running to the Startup configuration.



General Notes- Using multiple switches

1. If you use multiple switches they all need to have a different IP address.

2. Two switches: connect one GB uplink port to another GB uplink port

NOTE: please check which ports are configured as uplink ports.

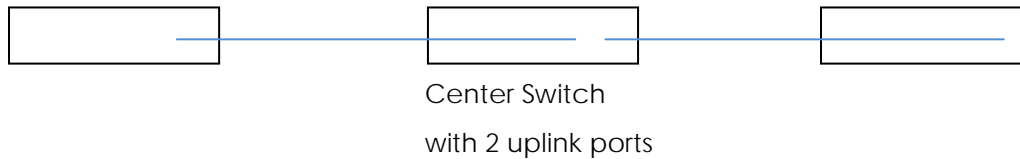
If needed you can connect an IEX16 and the myMix PLUG interface also to an uplink port, but never connect a myMix to it!

For SF302-08MP there can be 2 options:

G2 is uplink port (usual) or G1 and G2 are uplink ports.

The current setting for the SF300-24P includes the IP address 192.168.1.252 .

3. Three or more switches, they need to be in a star configuration.



So e.g. left and right can be SF302-08MP with only G2 as uplink, and center switch is a SF302-08MP with G1 and G2 as uplink.

If you need more switches than use the SF300-24P with 4 uplink ports or the one of the gigabit switches SG300-10, or Netgear GS108T (Multi 8) as center switch.