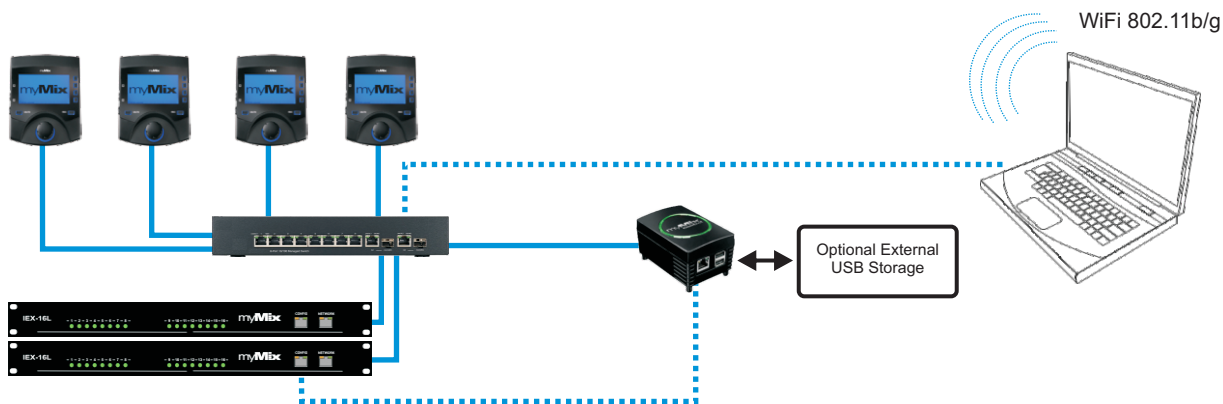


## Remote Configuration and Editing Software for myMix Systems

- Individual Configuration and Editing of myMix and IEX16
- Remote access to individual parameters including mixing functions
- Universal Web Browser Interface - Independent of Operating System
- myMix Plug Network Interface with WiFi 802.11b/g Access Point
- USB Port for external memory
- Backup/Download of complete system settings and individual settings
- Global Profile Change for myMix
- Locking Menu with individual parameter locking per myMix
- Offline Editing Capabilities

### System Diagram



The myMix PLUG interface is connected to the myMix network directly on a switch or through the configuration port of an IEX16L input expander. The access to the myMix PLUG web server is either through WiFi or connecting the client interface to the Ethernet Network.

myMix Control is a web browser operated remote control and configuration software for myMix systems. Accessing the myMix PLUG network interface via WiFi or LAN connection, the user logs in using a common web browser application. The myMix PLUG runs an auto discovery routine that shows all active devices on the network. All configuration and mixing data can be transferred from the units to the user's computer or an external USB storage device connected to the myMix PLUG. myMix CONTROL allows the complete back up of an entire system, individual units or single profiles and control of individual units remotely on the network. It is ideal for operating and supporting larger systems with ongoing set up changes, as in theatres, or with production companies, but also allows easy configuration and locking of dedicated functions on myMix devices in commercial and install applications.

## Remote control functions on myMix

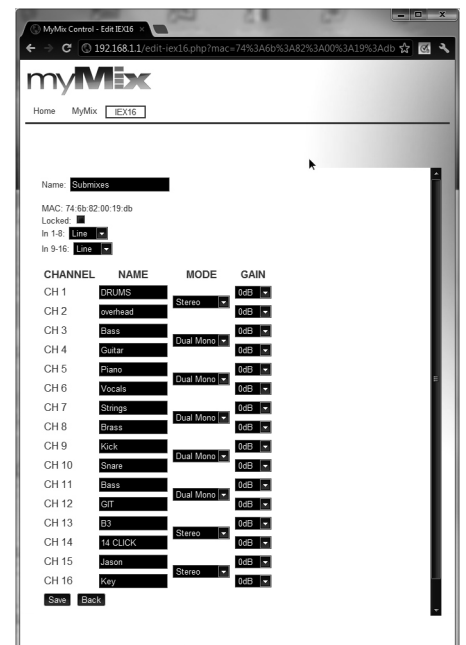
up/download: entire project, complete device settings, individual profiles, preferences, lock settings.  
 configuration of input mode, channel naming, send mix to network, master eq, effects, channel selection, editing of mix parameters (volume, effects sends, tone control, panorama/balance).  
 Locking parameters for myMix: global lock, record, mute, master volume, zero mix, solo, mute, settings, profiles, delete profiles, new profile, rename profile, local inputs/outputs, effects, master eq, sessions, delete session, rename session, play session, remote channel select, remote devices, preferences, unit name, administration, format sd card, restore factory defaults, update IEX16 firmware

## Remote control functions on IEX16L

input channel configuration, channel naming, activation of line/ADAT (IEX16L-A only), up/download entire unit setting, lock unit.

## Screenshot of myMix CONTROL software

IEX16 input configuration with device name, input selection, input configuration and channel naming.



## SPECIFICATIONS myMix PLUG

CPU	Marvel Kirkwood 6281-1.2GHz
RAM	512MB 16bit DDR2, 800MHz
NAND FLASH	512 MB
OS	Linux
WiFi	802.11 b/g
Ethernet	1 GB Port RJ45
USB	2 x USB 2.0
Power Input	100 - 240VAC/50-60Hz, Max. 20W
DC Consumption	5V/3.0A Max.
Power Connector	IEC C7
Dimensions	96 x 65 x 48.5mm (3.8" x 2.6" x 1.9")
Weight, net	0.6 kg (1.1lbs)

## DIMENSIONS myMix PLUG

