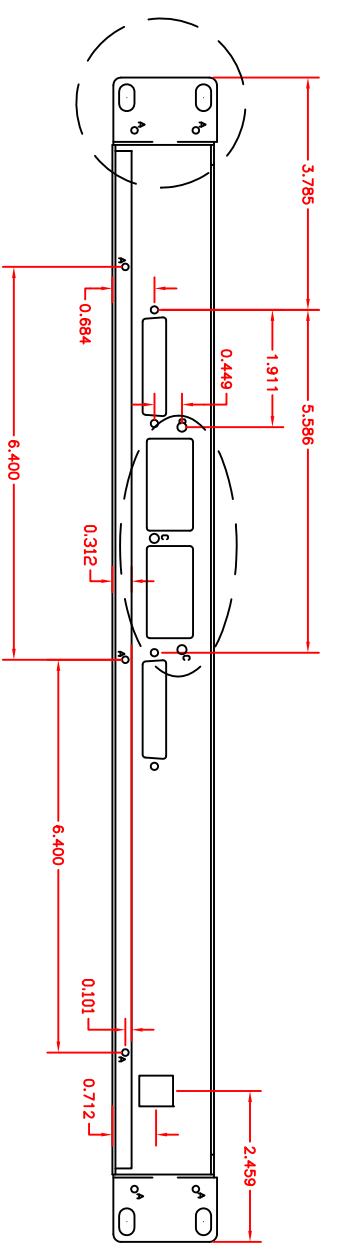
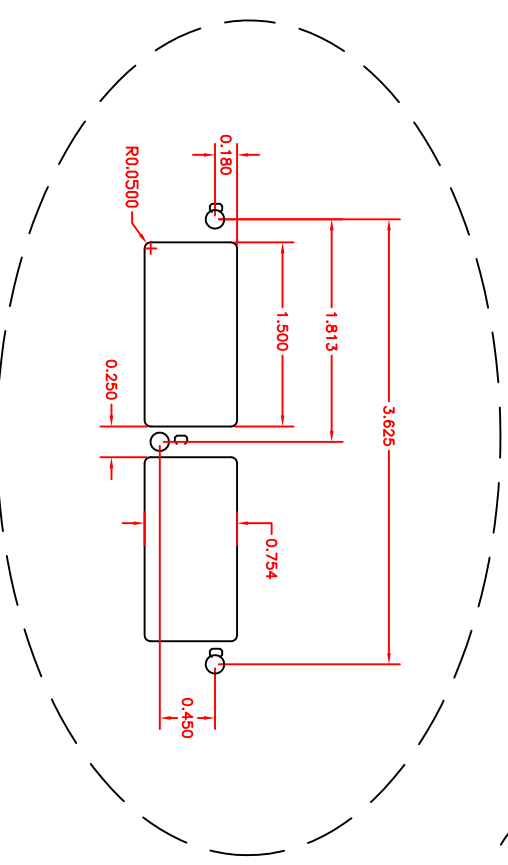
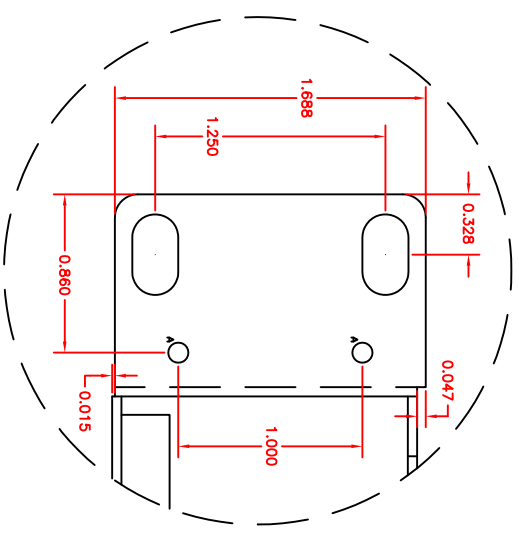
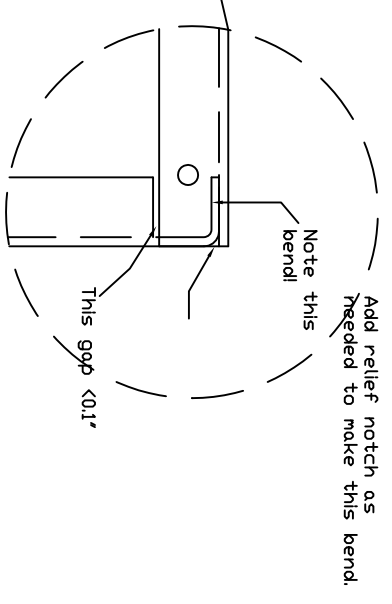
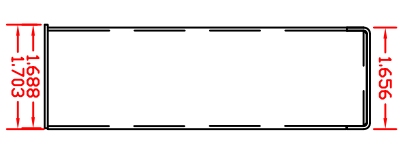
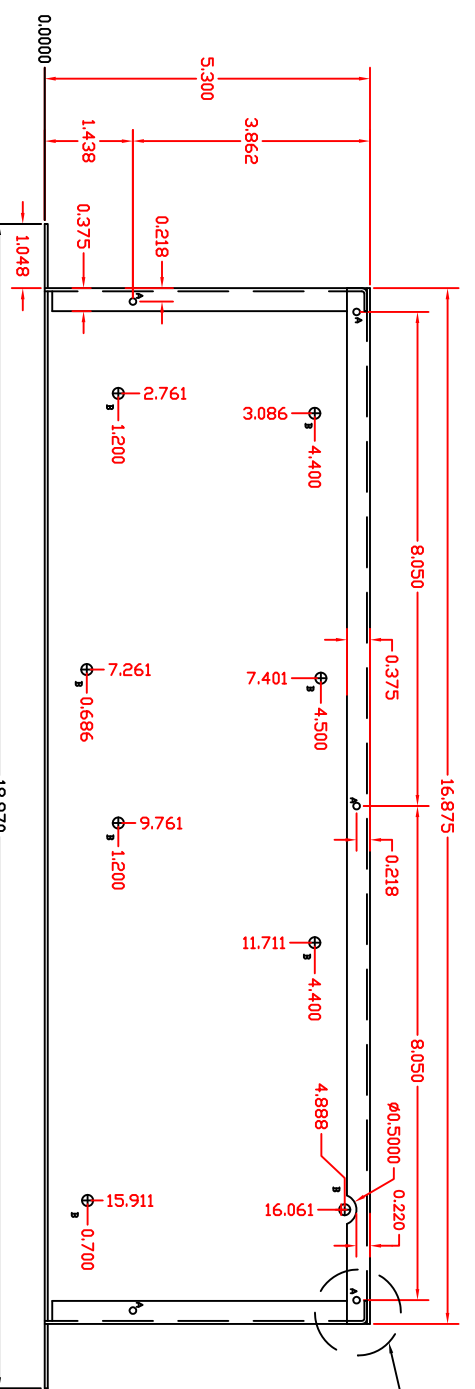
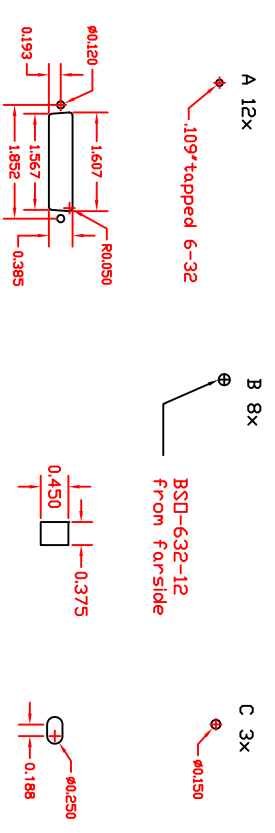


REVISIONS			
REV	DESCRIPTION	DATE	APPROVED
A	INITIAL RELEASE	5AUG10	RIK
D	Pilot Release	25AUG10	RIK
3.0	Added notch for screw	29OCT10	RIK
3.1	fixed Power cutout	03NOV10	RIK
4.0	Added ADAT cutout	25MAR11	RIK
4.1	Moved ADAT cutout down 0.025"	17APR11	RIK
4.2	Fixed dimension on exploded cutout to 0.18"	05MAY11	RIK

Material: 0.047" Steel (CRS)
 Finish: Flat Black Powder coat
 Note: Mask inside and lips so finish does not extend greater than 0.1" from all edges.
 Unless noted, all features are symmetrical on the unit.



PROPRIETARY DATA

THE DATA DISCLOSED IN THE DOCUMENT WAS ORIGINATED BY LAB X TECHNOLOGIES, LLC AND IS TO BE UTILIZED ONLY FOR THE SPECIFIC PURPOSES FOR WHICH IT WAS SUPPLIED. IT IS NOT TO BE DISCLOSED TO OTHERS OR REPRODUCED WITHOUT PRIOR WRITTEN CONSENT OF

LAB X TECHNOLOGIES, LLC

UNLESS OTHERWISE SPECIFIED ALL DIMENSIONS ARE IN INCHES
 TOLERANCES:
 ANGLES ±2°
 DEC XX ±.02 XXX ±.005

Lab X Technologies, LLC

Drawn: Rik Pardun

SIZE B DWG NO. IEX16 Base

REV 4.2

SCALE SHEET 1 OF 1