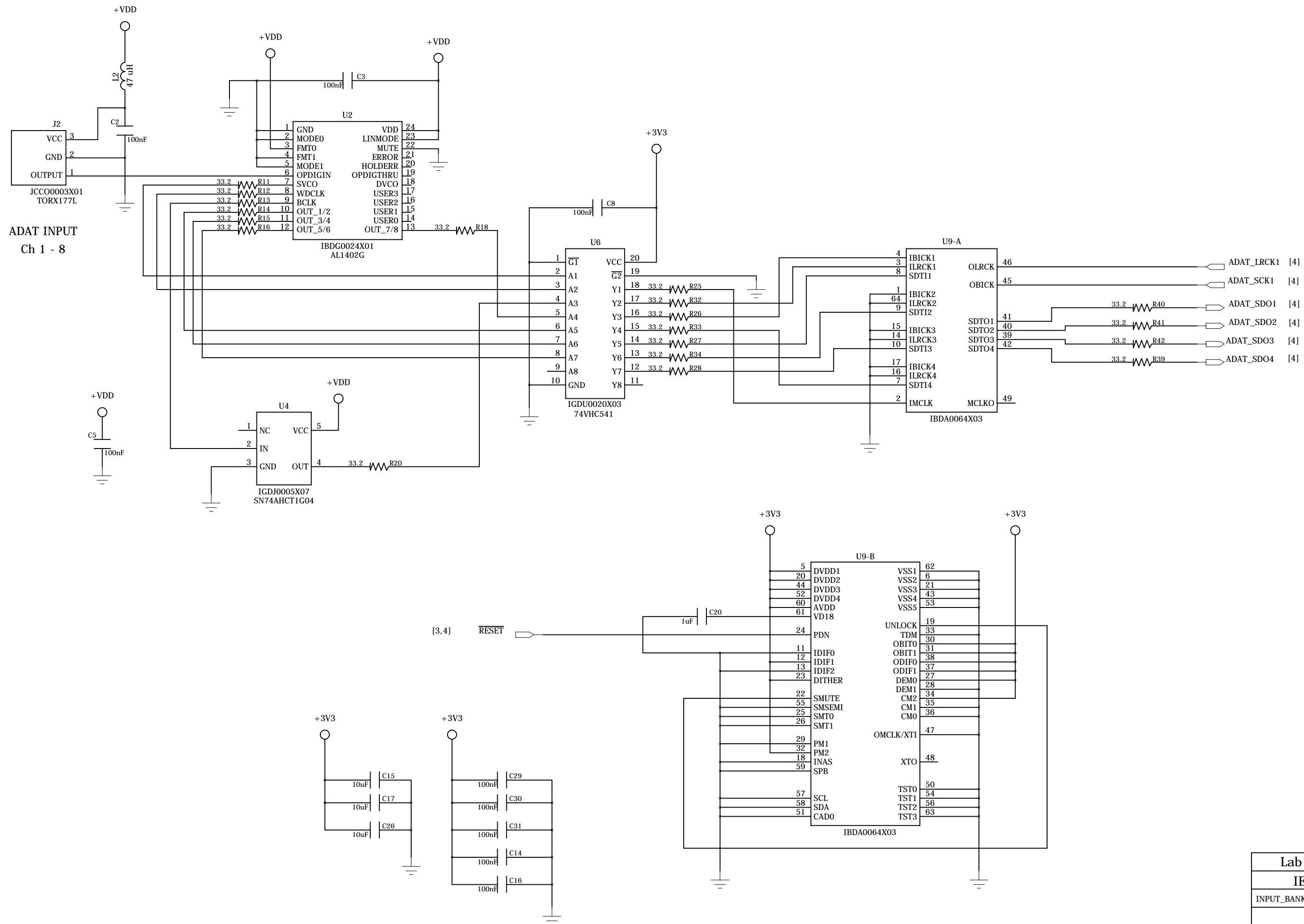


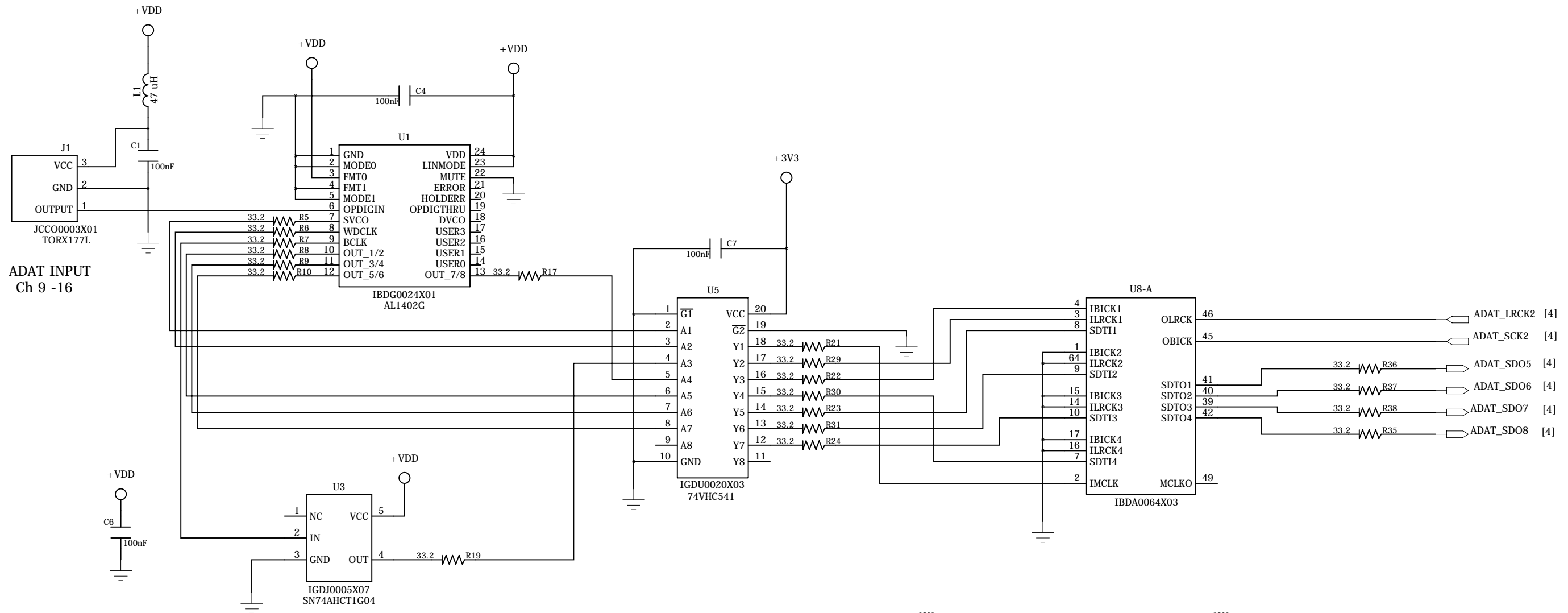
Lab X Technologies, LLC	
IEX-16 DIGITAL INPUTS	
TITLE	25MAR11
	Rev: V1.0
	Drawn By: AGS
	PAGE 1 OF 5

This drawing is not to be copied, reproduced, or disclosed, in part or whole, to a third party without written permission of the Copyright owner.

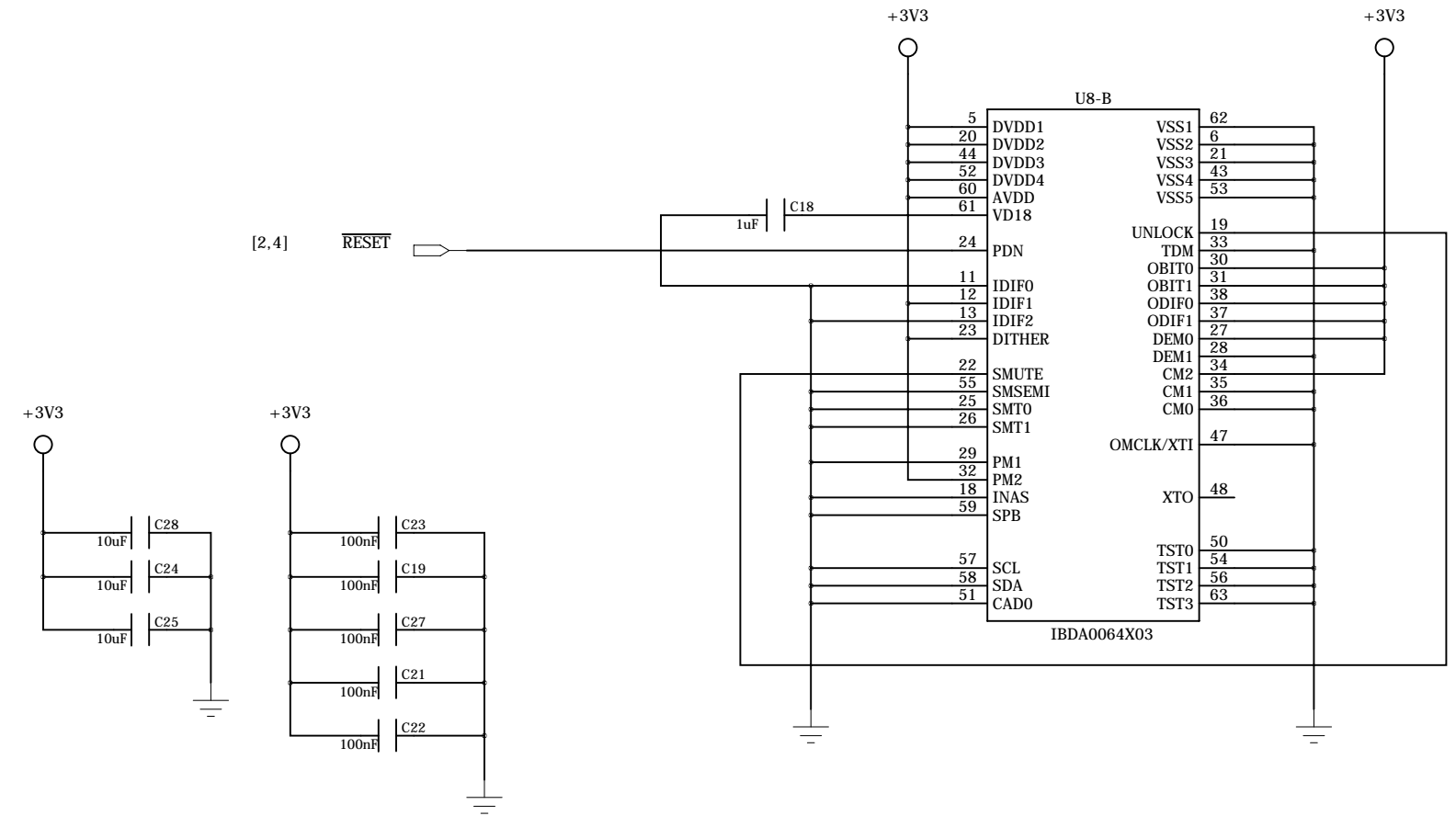


This drawing is not to be copied, reproduced, or disclosed, in part or whole, to a third party without written permission of the Copyright owner.

Lab X Technologies, LLC	
IEX-16 DIGITAL INPUTS	
INPUT_BANK_1	25MAR11
	Rev: V1.0
	Drawn By: AGS
	PAGE 2 OF 5

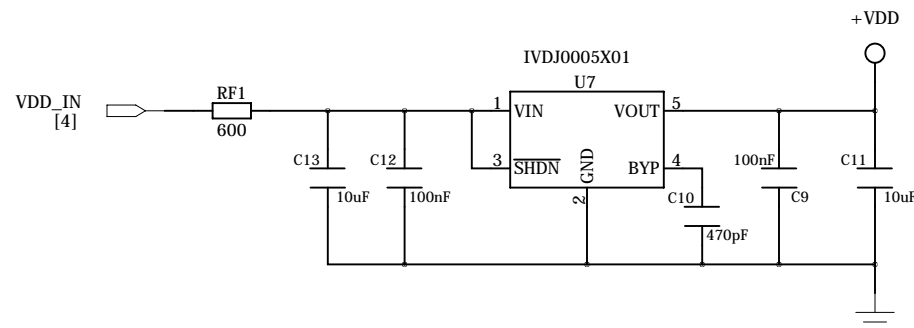
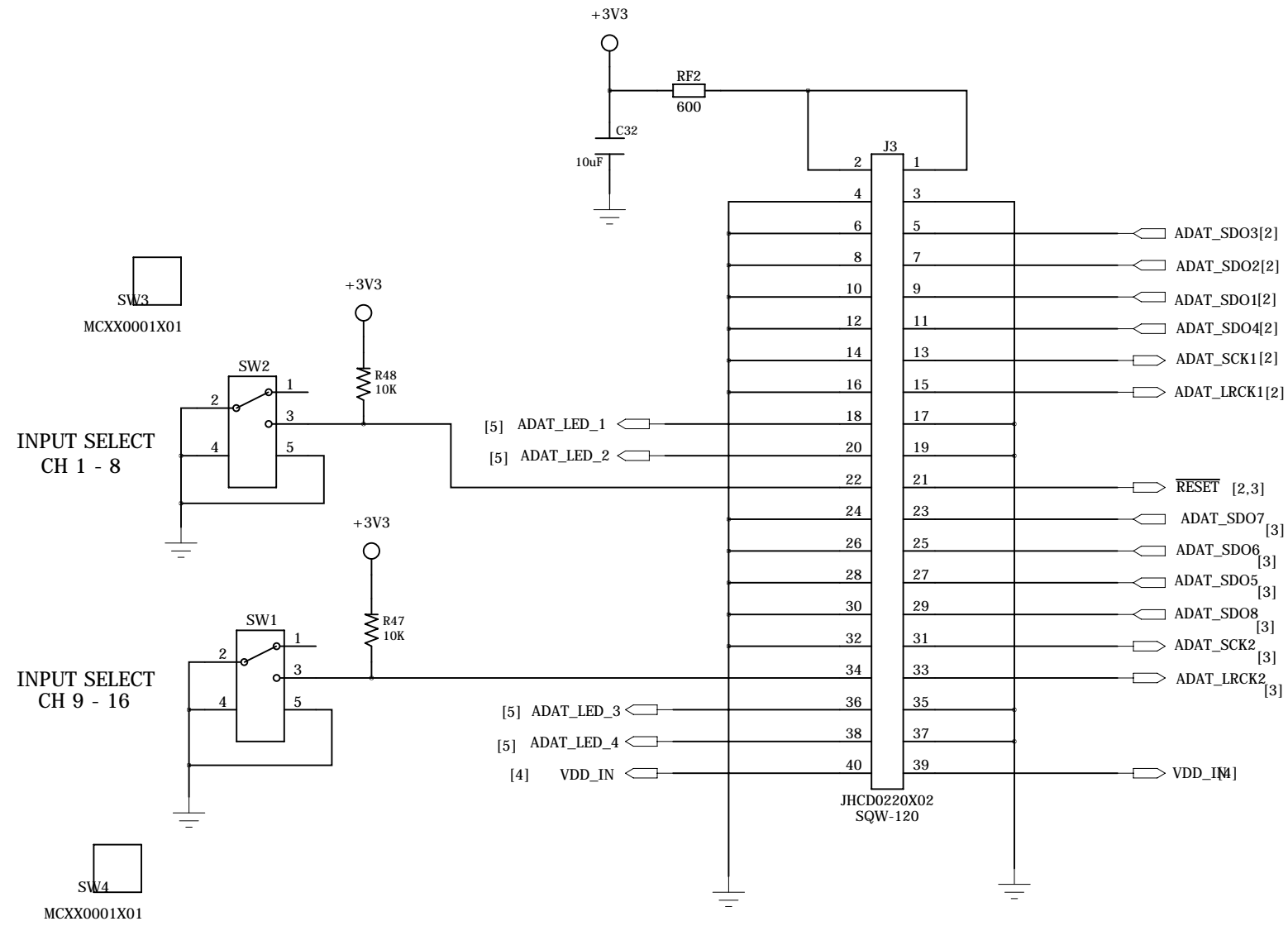


ADAT INPUT
Ch 9 -16



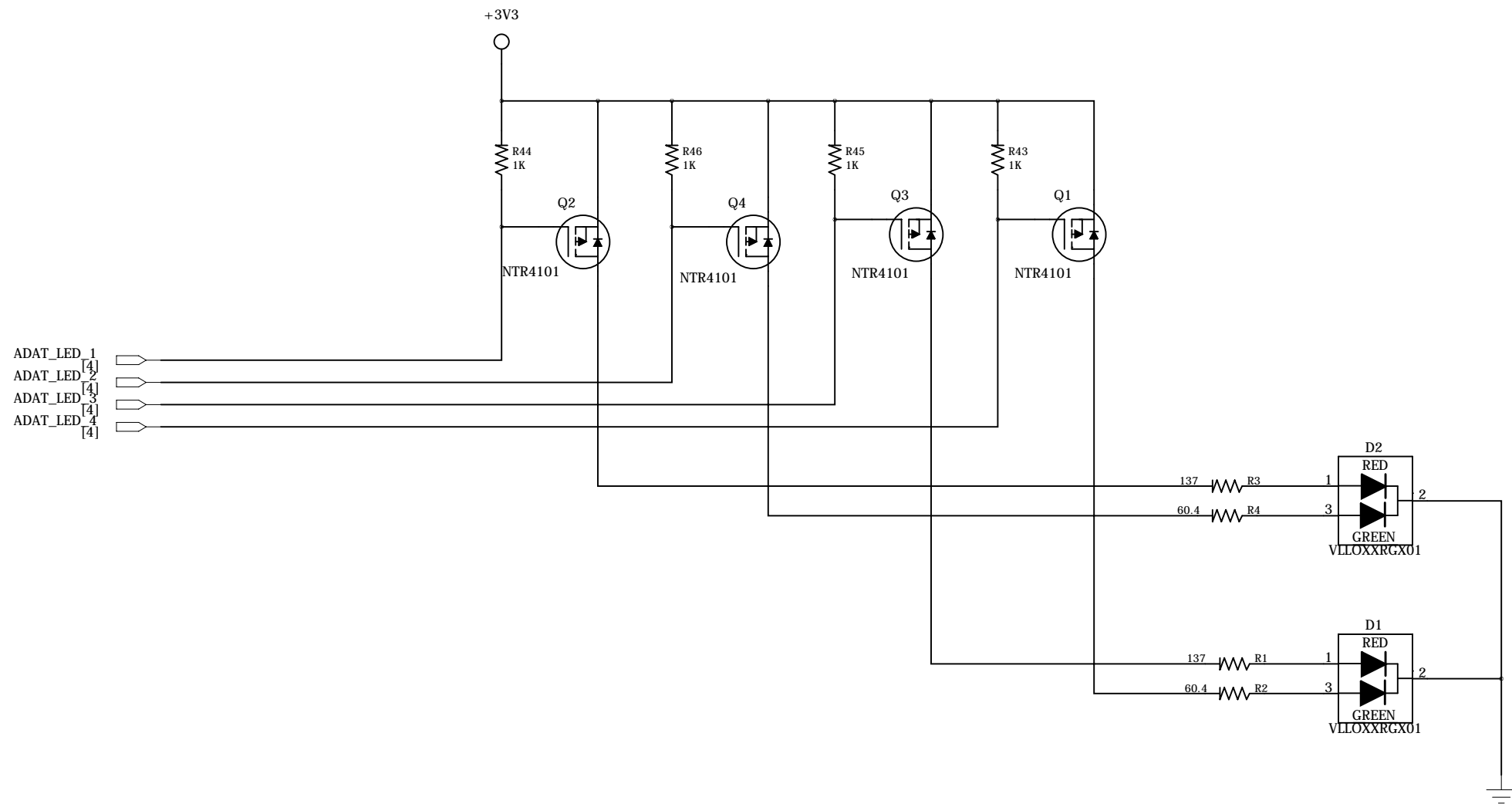
Lab X Technologies, LLC	
IEX-16 DIGITAL INPUTS	
INPUT_BANK_2	25MAR11
	Rev: V1.0
	Drawn By: AGS
	PAGE 3 OF 5

This drawing is not to be copied, reproduced, or disclosed, in part or whole, to a third party without written permission of the Copyright owner.



Lab X Technologies, LLC	
IEX-16 DIGITAL INPUTS	
MISC	25MAR11
	Rev: V1.0
	Drawn By: AGS
	PAGE 4 OF 5

This drawing is not to be copied, reproduced, or disclosed, in part or whole, to a third party without written permission of the Copyright owner.



This drawing is not to be copied, reproduced, or disclosed, in part or whole, to a third party without written permission of the Copyright owner.

Lab X Technologies, LLC	
IEX-16 DIGITAL INPUTS	
LEDS	25MAR11
	Rev: V1.0
	Drawn By: AGS
	PAGE 5 OF 5