

RELEASE NOTES myMix Control 1.68 XL and myMix Project Editor

The package myMix Control_1.68XL contains:

- the update file for myMix Control (update.bin)
- the new myMix Project Editor for 64-bit (x64) and 32-bit (x86) Windows 10 operating system
- the user manual for myMix Control
- the release note (this document)

myMix Control 1.68XL is fully compatible with all myMix devices on firmware 1.68. Project files created with the older 1.68 are fully compatible. 1.68XL features the new look of myMix with some UX enhancements. The manual is now also included on the myMix Control plug – so if you need anything, user instructions are right there.

To update your myMix Control plug to 1.68XL, please see the user manual. Note: you need to log-in as administrator and remember to power cycle when you are back on the log-in screen.

myMix Project Editor

The myMix project editor is a tool that lets you exchange the MAC address of myMix devices incl. IEX16 input expanders in existing project files.

Why would you need this?

The entire myMix system is fully decentralized and dynamic. Every audio channel contains a device label and the channel label you provided – however under the hood, the data used to make unique connections is based on the MAC address of each device. The settings data for each myMix is saved automatically, and the data you save as a project on myMix Control uses MAC addresses as a unique identifier.

If you changed a piece of hardware that is sending audio channels to the myMix network - for instance, exchanging the IEX-16 input expander - these 16 input channels would show up as “new channels” to all myMix units in the system. Input channel names and assignments were not transferred to the new IEX-16 because the project file keeps this data linked to the original unit's MAC address.

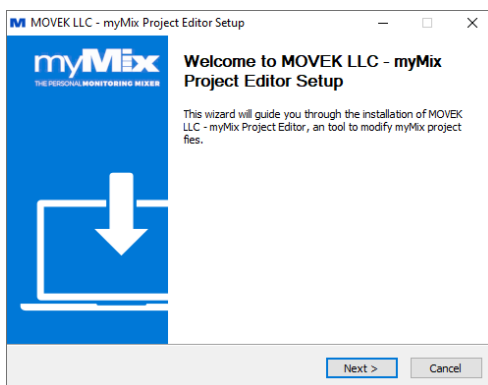
The myMix Project Editor allows you to open a myMix project that you stored on a USB or hard disk, change the MAC address to match your new hardware and save it. Once you load that edited project to your myMix Control, all myMix devices will now “see” the new channels with the same settings as stored before.

Installation note for myMix Project Editor

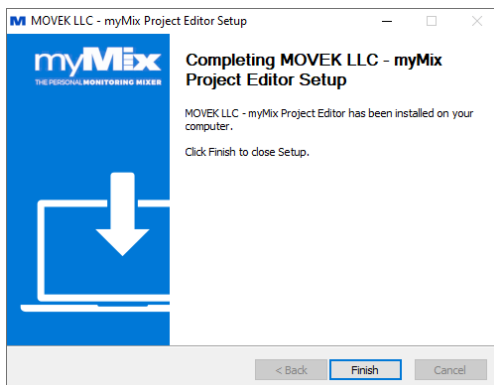
The project editor needs to be installed and has not been certified from Windows- so you need to accept and continue installation when prompted to abort.



Next you will see the install screen:

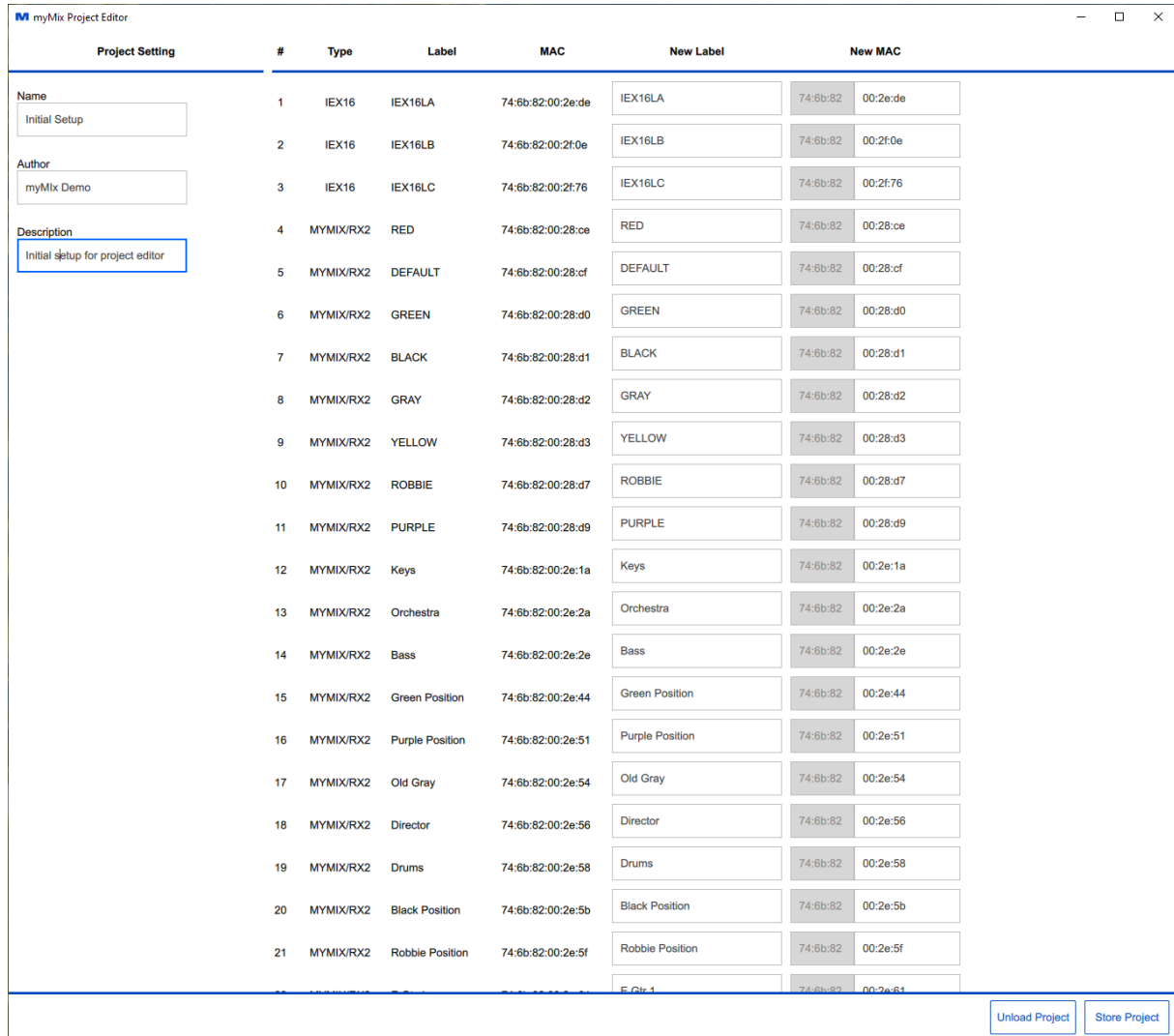


Follow instructions until you see and click "Finish".



Using the myMix Project Editor

To start the program, go to the program folder "MOVEK LLC" and click on myMix Project Editor.



The screenshot shows the myMix Project Editor window. On the left, there are three sections: "Name" with a text box containing "Initial Setup", "Author" with a text box containing "myMix Demo", and "Description" with a text box containing "Initial setup for project editor". The main area is a table with columns: #, Type, Label, MAC, New Label, and New MAC. The table lists 21 devices. At the bottom right, there are two buttons: "Unload Project" and "Store Project".

#	Type	Label	MAC	New Label	New MAC
1	IEX16	IEX16LA	74:6b:82:00:2e:de	IEX16LA	74:6b:82:00:2e:de
2	IEX16	IEX16LB	74:6b:82:00:2f:0e	IEX16LB	74:6b:82:00:2f:0e
3	IEX16	IEX16LC	74:6b:82:00:2f:76	IEX16LC	74:6b:82:00:2f:76
4	MYMIX/RX2	RED	74:6b:82:00:28:ce	RED	74:6b:82:00:28:ce
5	MYMIX/RX2	DEFAULT	74:6b:82:00:28:cf	DEFAULT	74:6b:82:00:28:cf
6	MYMIX/RX2	GREEN	74:6b:82:00:28:d0	GREEN	74:6b:82:00:28:d0
7	MYMIX/RX2	BLACK	74:6b:82:00:28:d1	BLACK	74:6b:82:00:28:d1
8	MYMIX/RX2	GRAY	74:6b:82:00:28:d2	GRAY	74:6b:82:00:28:d2
9	MYMIX/RX2	YELLOW	74:6b:82:00:28:d3	YELLOW	74:6b:82:00:28:d3
10	MYMIX/RX2	ROBBIE	74:6b:82:00:28:d7	ROBBIE	74:6b:82:00:28:d7
11	MYMIX/RX2	PURPLE	74:6b:82:00:28:d9	PURPLE	74:6b:82:00:28:d9
12	MYMIX/RX2	Keys	74:6b:82:00:2e:1a	Keys	74:6b:82:00:2e:1a
13	MYMIX/RX2	Orchestra	74:6b:82:00:2e:2a	Orchestra	74:6b:82:00:2e:2a
14	MYMIX/RX2	Bass	74:6b:82:00:2e:2e	Bass	74:6b:82:00:2e:2e
15	MYMIX/RX2	Green Position	74:6b:82:00:2e:44	Green Position	74:6b:82:00:2e:44
16	MYMIX/RX2	Purple Position	74:6b:82:00:2e:51	Purple Position	74:6b:82:00:2e:51
17	MYMIX/RX2	Old Gray	74:6b:82:00:2e:54	Old Gray	74:6b:82:00:2e:54
18	MYMIX/RX2	Director	74:6b:82:00:2e:56	Director	74:6b:82:00:2e:56
19	MYMIX/RX2	Drums	74:6b:82:00:2e:58	Drums	74:6b:82:00:2e:58
20	MYMIX/RX2	Black Position	74:6b:82:00:2e:5b	Black Position	74:6b:82:00:2e:5b
21	MYMIX/RX2	Robbie Position	74:6b:82:00:2e:5f	Robbie Position	74:6b:82:00:2e:5f

You will see project info, a list of all devices in the project and their current MAC addresses.

Enter the new MAC address of the device you replace (e.g. a new IEX16) and store the project- we recommend using a new name.

Load the project from the myMix plug and it will automatically send all the "new" information to the devices. So the kick drum channel that came from "old" MAC...00:2a:33 has now been replaced with "new" 00:2c:a2, but all settings on any myMix will be exactly like before. It's that simple.